

WHO ARE WE

1

SINCE 1998

2

> 500 EMPLOYEES

3

> 20 000 m²
UNDERROOF AREA

4

> 50 CERTIFIED
WELDERS

5

COMPLETE ENGINEERING
PACKAGE.

2 ACTIVITIES



Industrial equipment repair, maintain and erection services



Steel works / subcontracting



Electrical equipment repair, maintain and erection services



Engineering works



Destructive / NON-Destructive metal testing

THE VALUES WE PROMOTE

Leadership

Responsibility

Professional
team and
quality

Innovativeness

Long-term
partnership

STANDARTS USED IN MANUFACTURING, ERECTION, CERTIFICATION AND TESTING

- ISO 9001;
- ISO 14001;
- ISO 45001;
- EN 1090-2, execution class up to EXC3;
- ISO 3834-2;
- DIN 2303;
- ASME B31.3 Process piping ;
- BPVC Section V Nondestructive examination;
- BPVC Section IX Welding, brazing & fusing qualifications;
- EN ISO/IEC 17025:2018;
- EN ISO 13480;
- EN ISO 13445;
- EN ISO 12952.

ASSOCIATE MEMBERSHIPS

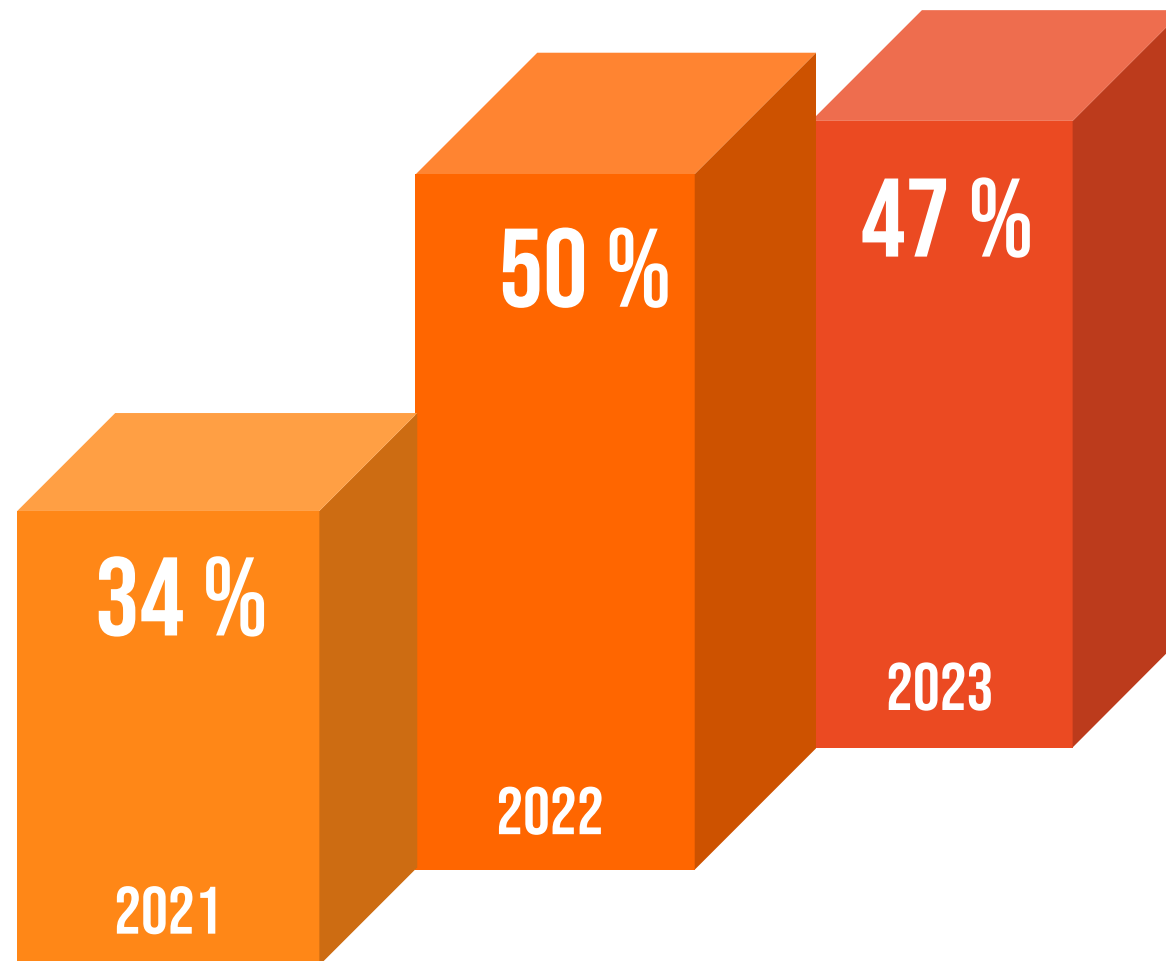
- LINPRA association - engineering and technology industry sector.
- Lithuanian Welders' Association - the representative of the company has been a member of the council since 2022.
- Lithuanian Defense and Security Industry Association (LGSPA) - defense and security industry sector.
- Finland – Lithuania business association – commercial cooperation.



COMPANY FINANCIAL DATA, Euro

	2021	2022	2023
Turnover	28.086.439	27.598.132	27.484.378
Manufacturing / Subcontracting	6.179.195	6.575.116	7.733.989
Repair, service, installation	15.417.809	14.255.238	11.759.998
Metal testing laboratory	602.873	431.727	339.421
Design / Engineering	1.365.226	1.924.833	2.387.992
Electrical works	3.212.739	3.874.338	5.262.978
Service of port facilities	1.308.597	536.880	Operation stopped
EBITDA	2.828.406	2.523.888	1.815.975
Investments, thous. Euro	2.017,3	1.147,0	1.431,0

EXTERNAL SALES, %



OVERALL EXPORT



Lithuania

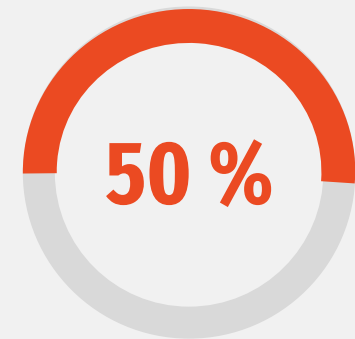


Norway, Finland, Sweden,
Germany, France.

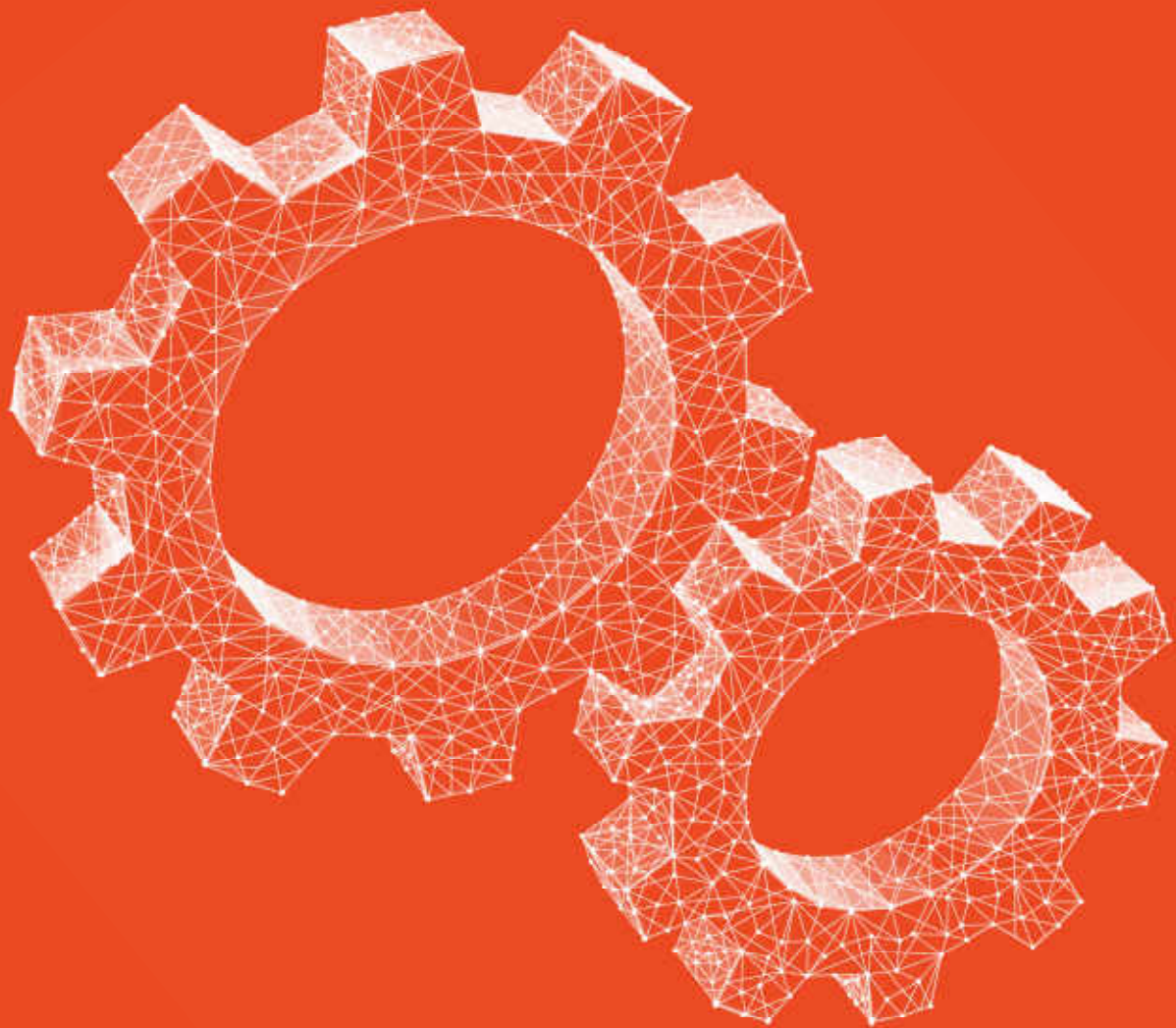
WORKSHOP EXPORT



Lithuania



Norway, Finland, Sweden,
Germany, France.

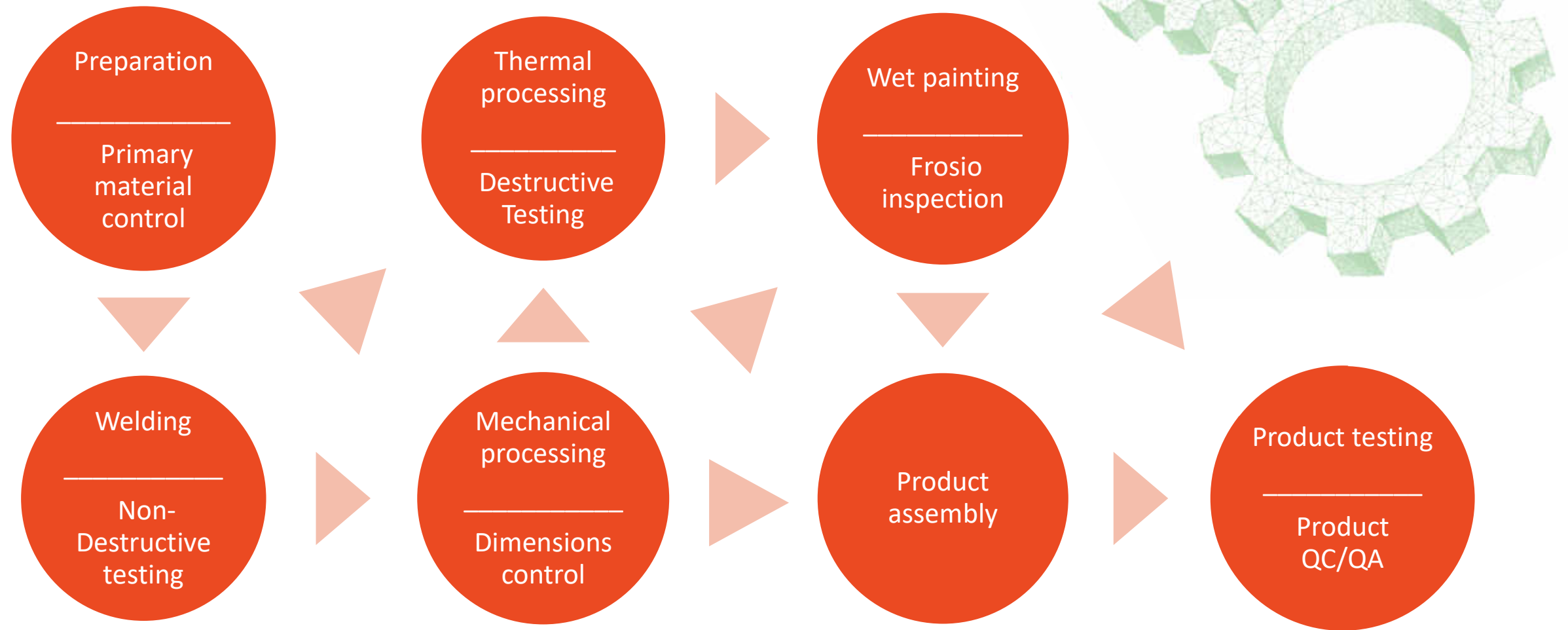


WHAT WE DO

KEY FACTS ABOUT MANUFACTURING

- ~7 mln. sales in 2023;
- 132 workshop personnel;
- ~13 000 m² underroof facility;
- 650 m² underroof painting area;
- 20t lifting capacity.

PRODUCTION SEQUENCE



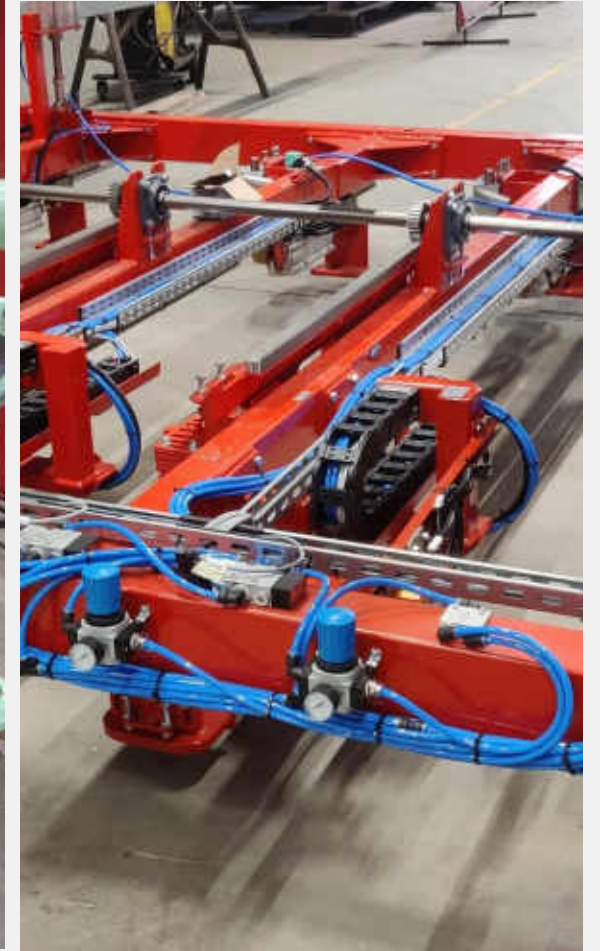
PRODUCTION TECHNICAL CAPABILITIES

#	Machining equipment / performed works	Product max dimensions. Mm
1.	Plasma / gas cutting	18000x2500x150
2.	Vertical axis CNC machining	6000x1800x800
3.	5-Axis CNC Boring & Milling Machine	2000x1800x1400
4.	CNC turning with active tools and Y axis	1280x375
5.	Vertical carousel turning machine	2500x1600
6.	Turning	1230x6000
7.	Round polishing	400x1500
8.	Flat polishing	1000x400x350
9.	Internal polishing	250x300
10.	Thermal treatment	Till 2000
11.	Shot blasting	12000x6000x4500
12.	Steel and stainless steel welding	Unlimited
13.	Rolling	2000x16
14.	Cutting	3000x15
15.	Bending	4000x10
16.	Wet painting	650m ²
17.	Assembly	30000x17500x4500

PRODUCTS:

- Wood and paper industry.
- Chemical industry.
- Onshore / Offshore equipment:
 - Cable storage equipment;
 - Cable handling equipment;
 - Onshore equipment.
- Welded assemblies.
- Machined parts.

WOOD AND PAPER INDUSTRY



CHEMICAL INDUSTRY



ONSHORE / OFFSHORE EQUIPMENT

CABLE STORAGE EQUIPMENT



ONSHORE / OFFSHORE EQUIPMENT

CABLE HANDLING EQUIPMENT



ONSHORE / OFFSHORE EQUIPMENT

CABLE HANDLING EQUIPMENT



ONSHORE / OFFSHORE EQUIPMENT

ONSHORE EQUIPMENT



WELDED ASSEMBLIES



MACHINED PARTS



MANUFACTURING PARTNERS

Metso:Outotec

LATVIJAS FINIERIS

AKCIJU SABIEDRĪBA



DIEFFENBACHER



METAL TESTING LABORATORY

- >0.5 mln. annual turnover;
- NDT Testing using VT, PT, MT, UT, RT methods;
- II - III Level NDT (NDE) Specialist acc. EN and ASME:
- Certified Personnel according EN ISO 9712 requirements and approved by RTPO for PED 2014/68/EU;
- Certified Personnel according SNT-TC-1A requirements and approved by ASNT/ACCP Level III Certified Members;
- Destructive Testing:
 - Tensile, Bending, Impact, Hardness, Macro and Fracture Methods.
- Frosio Testing:
 - Dry film thickness measurements, salt and dust measurements on surface, roughnes measurements after blasting, adhesion testing after painting.

INSTALLATION/REPAIR/SERVICE | Key facts

- ~15 mln. turnover in 2023;
- 214 site/project personnel;
- 50 Certified Welders according EN ISO 9606 and ASME BPVC Section IX;
- Welding of various metals: stainless steel, cast iron, carbon steel, duplex steel, molybdenum steel, chrome-molybdenum steel, monel steel, etc.

INSTALLATION/REPAIR/SERVICE | Key facts

- Installation, repair, service:
 - Pipelines;
 - Process vessels, containers and devices;
 - Pressure equipment;
 - Rotating devices;
 - Industrial facilities and steel structures.
- Balancing of rotating devices.



Project: Maintenance and repair of fertilizer plant

Customer: AB "Achema"

Project location: Jonava, Lithuania

Project implementation: Ongoing

Project description: Maintenance and repair of fertilizer plant

Completed works: Repair and maintenance of process equipment, pipelines, etc.
Repair and maintenance of electrical equipment



Project: Maintenance and repair of petroleum refinery plant

Customer: AB "ORLEN Lietuva"

Project location: Mažeikiai, Lithuania

Project implementation: Ongoing

Project description: Maintenance and repair of petroleum refinery plant

Completed works: Repair and maintenance of process equipment, pipelines, etc.

Project: Kaunas combined heat and power WtE plant

Customer: LAB SA

Project location: Kaunas, Lithuania

Project implementation: 2019–2020

Project description: Fabrication and installation of metal structures (270 tons), installation of equipment (380 tons)

Completed works: Design, installation of electrical and automation equipment, commissioning
Fabrication of metal structures
Installation of metal structures
Installation of equipment





Project: Formalin plant

Customer: AB "Achema"

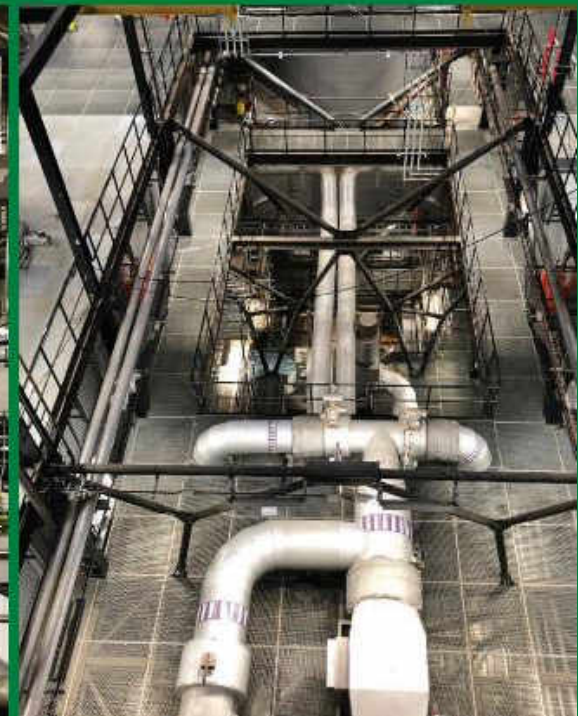
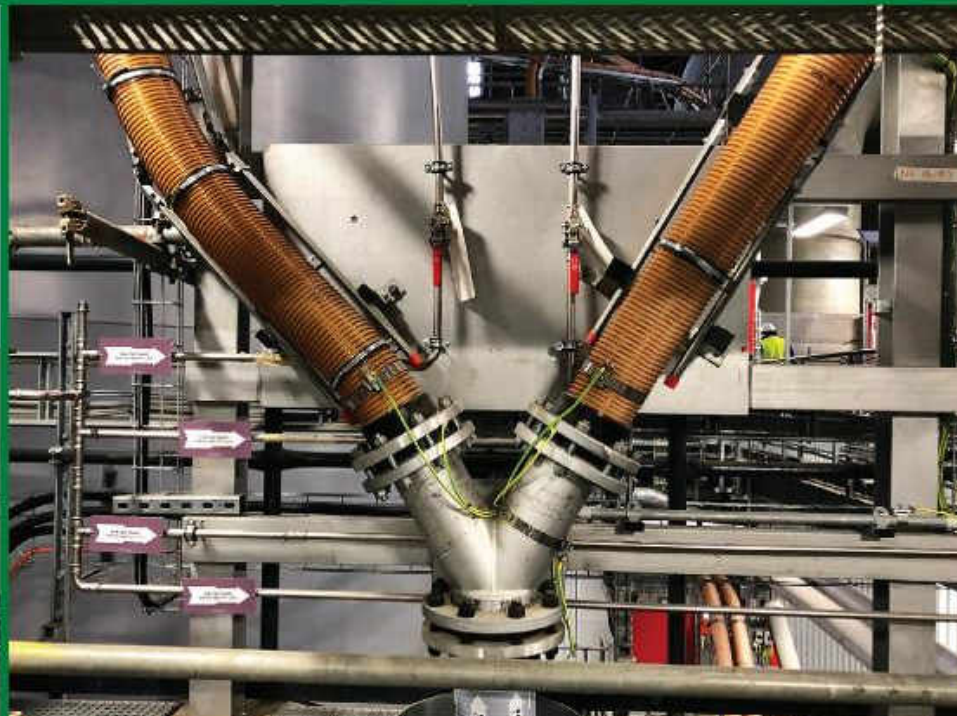
Project location: Jonava, Lithuania

Project implementation: 2016–2018

Project description: Formalin (concentration 37 %) production capacity 100 000 t/year
Upgrade of formalin storage 1,800 m³
Installation of storage of formaldehyde resins 1,000 m³

Completed works: Basic design
Detailed design
Project implementation supervision
Fabrication of process equipment, installation and commissioning
Fabrication and installation of metal structures (300 tons)
Installation and commissioning of electrical equipment

Project: Fabrication and installation of pipelines, pressure testing, NDT
Customer: LAB SA
Project location: Copenhagen, Denmark
Project implementation: 2019
Project description: Supply, fabrication and installation of water heating and supply.
Temperature 260°C, pressure 250 Bar.
Completed works: Supply of pipelines and fittings
Fabrication and installation of prefabricated pipelines (ca. 4500 "weld-inches")
Non-destructive testing and pressure testing of pipelines,
handover to certifying body
Fabrication and installation of supports





Project: PET production line project NEO-3

Builder: UAB "NEO GROUP"

Project location: Klaipėda, Lithuania

Project implementation: 2016–2018

Project description: PET production line project NEO-3

Completed works: Basic and detailed design
Process equipment installation and commissioning
Total weight installed equipment: 700 tons.
Transportation of 4 pcs. of reactors from Klaipėda port, and installation onsite: 290 tons



Project: *Grande Paroisse* Nitric acid plant

Customer: AB "Achema"

Project location: Jonava, Lithuania

Project implementation: 2012–2015

Project description: Nitric acid plant
capacity 800 t/day

Completed works: Basic design
Detail design
Design implementation
supervision
Production of process
equipment, installation and
commissioning
Installation and commissioning
of air compressor, turbine of
waste and nitrous gases
Manufacture and erection of
metal structures
Installation and commissioning
of electrical equipment

PROJECT PARTNERS

Hitachi Zosen
INOVA

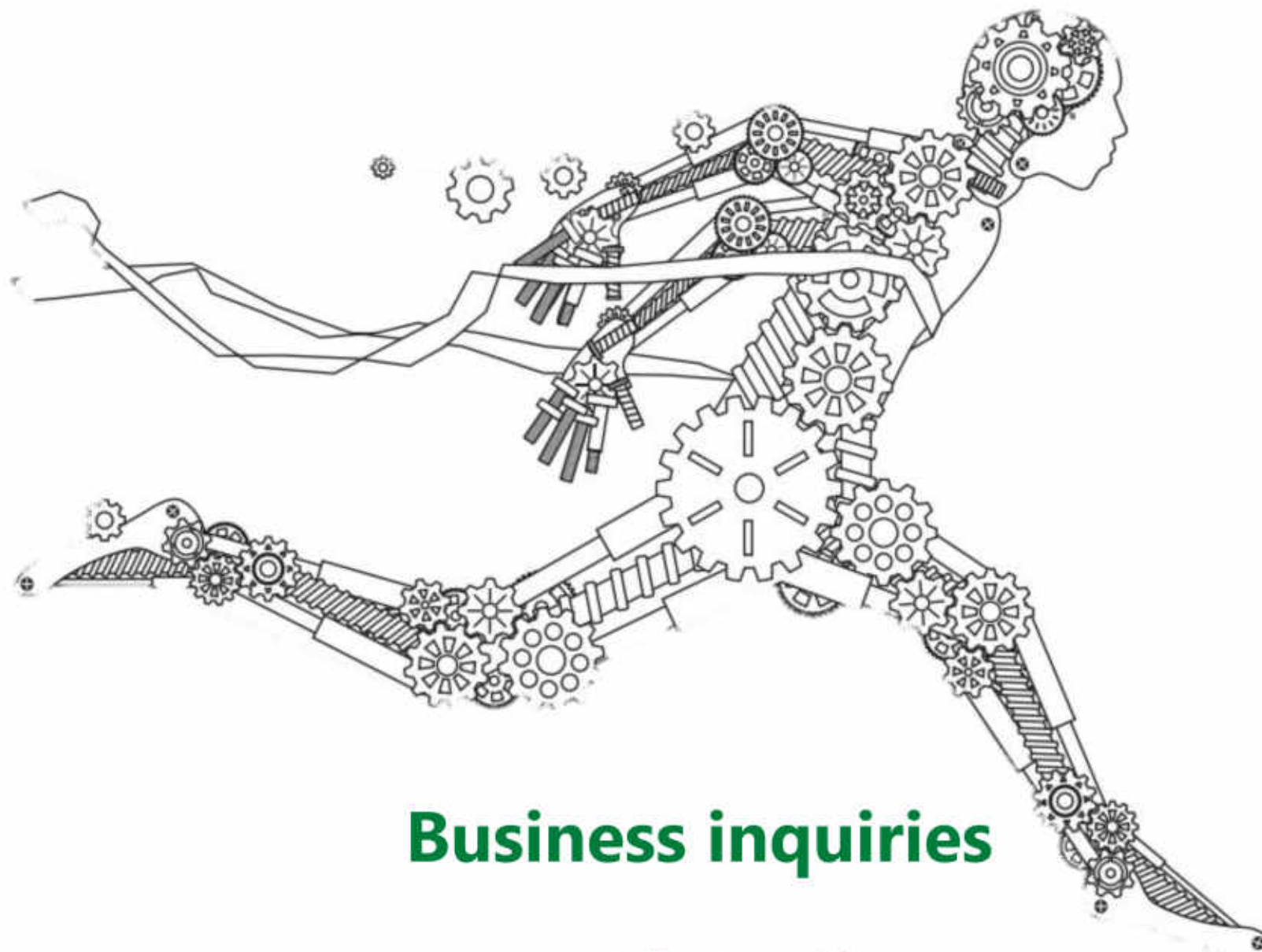


BRANCH „Letenerga“

- ~4 mln. annual turnover;
 - 80 workshop personnel;
 - >5.000 m² underroof facilities.
-
- Installation/repair of electrical/automation devices;
 - Maintenance of high voltage equipment (up to 110kV);
 - Maintenance of telemechanics systems;
 - IT and electrical equipment Maintenance.

BRANCH „Projektų centras“

- <2 mln. annual turnover;
 - 40 engineers;
 - More than 900 successfully completed projects.
-
- Design of industrial, energy, logistics buildings, wind and solar power plants, bio-production and treatment facilities, engineering networks;
 - Comprehensive design services;
 - Design of non-standard devices;
 - Engineering consultations;
 - Technology development/adaptation.



Business inquiries

UAB "IREMAS"

Address: Jonalaukio k.1, Jonavos sen., Jonavos r. LT-55296

E-mail: a.lisonka@iremas.lt Website: www.iremas.lt